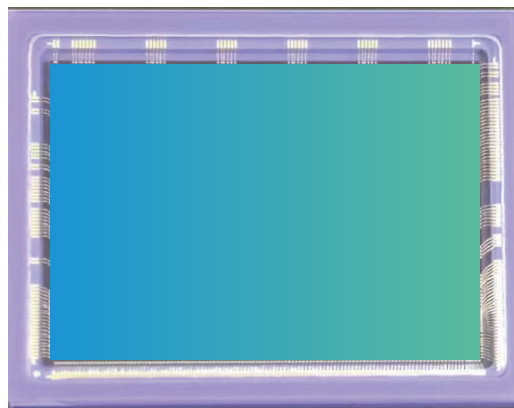


ISG3305

GLOBAL SHUTTER CMOS IMAGE SENSOR



产品介绍 CHIEF APPLICATION

The ISG3305 is a CMOS image sensor with a 39-megapixel Global Shutter with a pixel size of 2.7um and an effective pixel array of 7680 columns * 5120 rows, which can realize 8bit, 10bit and 12bit data output. Built-in DPC bad spot correction and binning functions, while having the advantages of high resolution, high frame rate and low PLS.

规格说明 Specification

| 项目 Item | 参数 Parameters |
|--------------------------------|--|
| Active Array Size | 7680(H)*5120(V) |
| Pixel Size | 2.7um x 2.7um |
| Lens Size | 1.5 Inch |
| Operating Junction Temperature | -40~85°C |
| Output Format | RAW8/10/12 |
| PLS | <-96dB |
| Full Well Capacity | >9.5K e^- |
| Dynamic Range | >66dB |
| SNR Max | >40dB |
| Dark Current | <200 e^- /s@60°C |
| QE | >90%@550nm >50%@850nm >30%@940nm |

应用场景 Application Scenarios

- 机器视觉 Machine Vision
- 摄影机 Camera
- 运动监测 Motion Monitoring
- 高速检测 High Speed detection

产品特性 Product Feature

- 高速图像处理 High-speed Image Processing
- 动态检测 Dynamic Detection
- 高帧率 High Frame rate
- 低功耗 Low Power consumption



■ **Chengdu Office** (Product Center - Headquarters)
 9-10F, Unit B6-2, AI International Hub, 171# Hele 2nd street, Hi-Tech District, Chengdu, P.R.China
 TEL: 028-68669333 WEB: www.imgds.com
 E-mail: imgds@imagedesign.com

■ **Shanghai Office** (R&D Center)
 497 Gaosi Road, Zhagjiang High Tech Park, Pudong New Area, Shanghai

■ **Shenzhen Office** (Support Center)
 3F, tower t2-a, Shenzhen Software Park, No. 22, gaoxinnan 7th Road, Nanshan District, Shenzhen