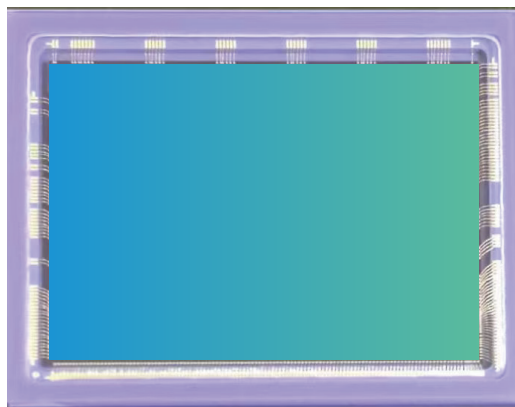


ISG9005

GLOBAL SHUTTER CMOS IMAGE SENSOR



产品介绍 CHIEF APPLICATION

The ISG9005 is a CMOS image sensor with a 9-megapixel Global Shutter, a pixel size of 5.4um, and an effective pixel array of 3840 columns * 2560 rows. The ISG9005 Added Infra-red enhancement features excellent near-infrared sensitivity, which can reduce the energy of the infrared LED drive. External trigger, multi-chip synchronization function, provide on-chip temperature sensor, and flexible, rich configuration functions.

规格说明 Specification

项目 Item	参数 Parameters
Active Array Size	3840(H)*2560(V)
Pixel Size	5.4um x 5.4um
Lens Size	1.5 Inch
Operating Junction Temperature	-40~85°C
Output Format	RAW8/10/12
PLS	<-96dB
Full Well Capacity	>38ke ⁻
Dynamic Range	>66dB
SNR Max	>40dB
Dark Current	<200e ⁻ /s@60°C
QE	>90%@550nm >50%@850nm >30%@940nm

应用场景 Application Scenarios

- 机器视觉
Machine Vision
- 工业检测
Industrial Inspection
- 智能交通
ITS
- 医疗成像
Medical Imaging

产品特性 Product Feature

- 近红外增强
High-speed Image Processing
- 内置温度传感器
Built-in Temperature sensor
- 多芯片同步工作
Multiple Chips work synchronously
- 丰富的功能设置
Rich Function settings



■ **Chengdu Office** (Product Center - Headquarters)
9-10F, Unit B6-2, AI International Hub, 171# Hele 2nd street, Hi-Tech District, Chengdu, P.R.China
TEL: 028-68669333 WEB: www.imgds.com
E-mail: imgds@imagedesign.com

■ **Shanghai Office** (R&D Center)
497 Gaosi Road, Zhagjiang High Tech Park, Pudong New Area, Shanghai

■ **Shenzhen Office** (Support Center)
3F, tower t2-a, Shenzhen Software Park, No. 22, gaoxinnan 7th Road, Nanshan District, Shenzhen