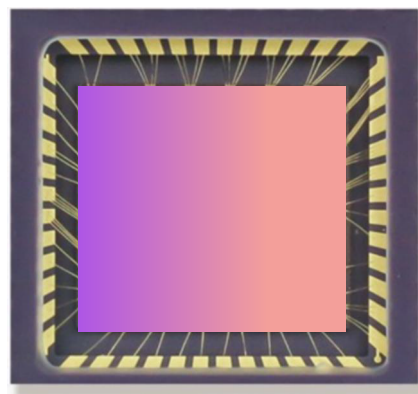


# ISG1307

## GLOBAL SHUTTER CMOS IMAGE SENSOR



### 产品介绍 CHIEF APPLICATION

The ISG1307 is a CMOS image sensor with a 1/2-inch 1.3 megapixel Global Shutter, with an effective pixel array of 1280X1024 and a total pixel of 130W. The ISG1307 chip uses analog and digital dark pixel correction function to improve the dynamic range of the sensor.

### 规格说明 Specification

项目   Item	参数   Parameters
Active Array Size	1280(H)*1024(V)
Pixel Size	4.8 um x 4.8 um
Lens Size	1/2 inch
Operating Junction Temperature	-40~85°C
Stable Image Temperature	-10~65°C
Output Format	RAW10
Sensitivity	6.5V/lux.s
Full Well Capacity	12000e <sup>-</sup>
Dynamic Range	>60dB
SNR Max	41dB
Frame Rate	210FPS

### 应用场景 Application Scenarios

- 机器视觉 Machine Vision
- 智能交通 ITS
- 运动监测 Motion Monitoring
- 高速检测 High Speed detection

### 产品特性 Product Feature

- 高速图像处理 High-speed Image Processing
- 动态检测 Dynamic Detection
- 高帧率 High Frame rate
- 低功耗 Low Power consumption



■ **Chengdu Office** (Product Center - Headquarters)  
 9-10F, Unit B6-2, AI International Hub, 171# Hele 2nd street, Hi-Tech District, Chengdu, P.R.China  
 TEL: 028-68669333 WEB: www.imgds.com  
 E-mail: imgds@imagedesign.com

■ **Shanghai Office** (R&D Center)  
 497 Gaosi Road, Zhagjiang High Tech Park, Pudong New Area, Shanghai

■ **Shenzhen Office** (Support Center)  
 3F, tower t2-a, Shenzhen Software Park, No. 22, gaoxinnan 7th Road, Nanshan District, Shenzhen