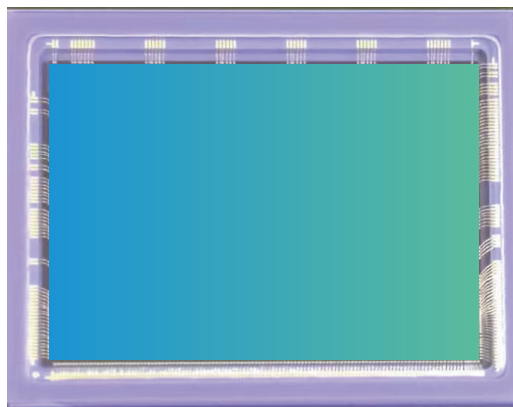


# ISG9005

## GLOBAL SHUTTER CMOS IMAGE SENSOR

### 产品介绍

### CHIEF APPLICATION



The ISG9005 is a CMOS image sensor with a 9M pixel Global Shutter, a pixel size of 5.4um, and an effective pixel array of 3840 columns \* 2560 rows. The ISG9005 Added Infrared enhancement features excellent near-infrared sensitivity, which can reduce the energy of the infrared LED drive. External trigger, multi-chip synchronization function, provide on-chip temperature sensor, and flexible, rich configuration functions.

### 规格说明

### Specification

| 项目   Item            | 参数   Item                              |
|----------------------|--|
| Active Array Size    | 3840(H)*2560(V)                        |
| Pixel Size           | 5.4um x 5.4um                          |
| Lens Size            | 1.5 Inch                               |
| TEMP Range Operation | -40~85℃                                |
| Output Format        | RAW8/10/12                             |
| PLS                  | <-96dB                                 |
| Full Well Capacity   | >38ke <sup>-</sup>                     |
| Dynamic Range        | >66dB                                  |
| SNR Max              | >40dB                                  |
| Dark Current         | <200e <sup>-</sup> /s@60℃              |
| QE                   | >90%@550nm<br>>50%@850nm<br>>30%@940nm |

### 应用场景

### Application Scenarios

■ 机器视觉  
Machine Vision

■ 工业检测  
Industrial Inspection

■ 智能交通  
ITS

■ 医疗成像  
Medical Imaging

### 产品特性

### Product Feature

■ 近红外增强  
High-speed Image  
Processing

■ 内置温度传感器  
Built-in Temperature  
sensor

■ 多芯片同步工作  
Multiple Chips work  
synchronously

■ 丰富的功能设置  
Rich Function settings



#### ■ Chengdu Office (Product Center - Headquarters)

9-10F, Unit B6-2, AI International Hub, 171# Hele 2nd street, Hi-Tech District, Chengdu, P.R.China

TEL: 028-68669333 WEB: www.imgds.com  
E-mail: imgds@imagedesign.com

#### ■ Shanghai Office (R&D Center)

497 Gaosi Road, Zhagjiang High Tech Park, Pudong New Area, Shanghai

#### ■ Shenzhen Office (Support Center)

3F, tower t2-a, Shenzhen Software Park, No. 22, gaoxinnan 7th Road, Nanshan District, Shenzhen