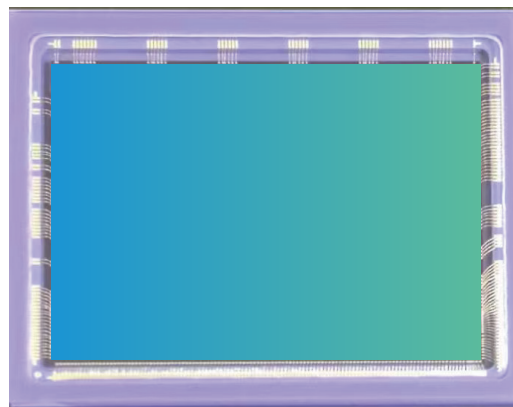


# ISG9005

## GLOBAL SHUTTER CMOS IMAGE SENSOR

### 产品介绍 CHIEF APPLICATION



The ISG9005 is a CMOS image sensor with a 9M pixel Global Shutter, a pixel size of 5.4um, and an effective pixel array of 3840 columns \* 2560 rows. The ISG9005 Added Infrared enhancement features excellent near-infrared sensitivity, which can reduce the energy of the infrared LED drive. External trigger, multi-chip synchronization function, provide on-chip temperature sensor, and flexible, rich configuration functions.

### 规格说明 Specification

项目   Item	参数   Item
Activ Array Size	3840(H)*2560(V)
Pixel Size	5.4um x 5.4um
Lens Size	1.5 Inch
TEMP Range Operation	-40~85℃
Output Format	RAW8/10/12
PLS	<-96dB
Full Well Capacity	>38ke <sup>-</sup>
Dynamic Range	>66dB
SNR Max	>40dB
Dark Current	<200e <sup>-</sup> /s@60℃
QE	>90%@550nm >50%@850nm >30%@940nm

### 应用场景 Application Scenarios

- 机器视觉  
Machine Vision
- 工业检测  
Industrial Inspection
- 智能交通  
ITS
- 医疗成像  
Medical Imaging

### 产品特性 Product Feature

- 近红外增强  
High-speed Image Processing
- 内置温度传感器  
Built-in Temperature sensor
- 多芯片同步工作  
Multiple Chips work synchronously
- 丰富的功能设置  
Rich Function settings



■ **Chengdu Office** (Product Center - Headquarters)  
9-10F, Unit B6-2, AI International Hub, 171# Hele 2nd street, Hi-Tech District, Chengdu, P.R.China  
TEL: 028-68669333 WEB: www.imgds.com  
E-mail: imgds@imagedesign.com

■ **Shanghai Office** (R&D Center)  
497 Gaosi Road, Zhagjiang High Tech Park, Pudong New Area, Shanghai

■ **Shenzhen Office** (Support Center)  
3F, tower t2-a, Shenzhen Software Park, No. 22, gaoxinnan 7th Road, Nanshan District, Shenzhen