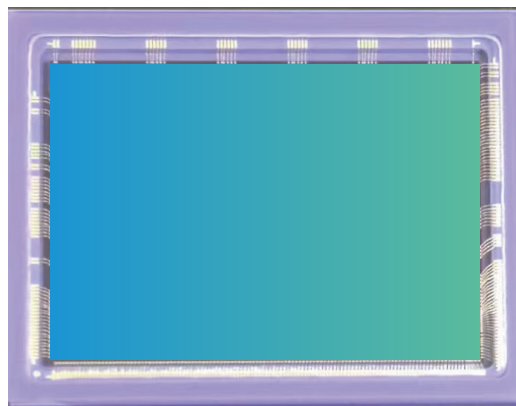


ISG3305

GLOBAL SHUTTER CMOS IMAGE SENSOR

产品介绍

CHIEF APPLICATION



The ISG3305 is a CMOS image sensor with a 39M pixel Global Shutter with a pixel size of 2.7um and an effective pixel array of 7680 columns * 5120 rows, which can realize 8bit, 10bit and 12bit data output. Built-in DPC bad spot correction and binning functions, while having the advantages of high resolution, high frame rate and low PLS.

规格说明

Specification

项目 Item	参数 Item
Activ Array Size	7680(H)*5120(V)
Pixel Size	2.7um x 2.7um
Lens Size	1.5 Inch
TEMP Range Operation	-40~85℃
Output Format	RAW8/10/12
PLS	<-96dB
Full Well Capacity	>9.5K e^{-}
Dynamic Range	>66dB
SNR Max	>40dB
Dark Current	<200 e^{-} /s@60℃
QE	>90%@550nm >50%@850nm >30%@940nm

应用场景

Application Scenarios

机器视觉

Machine Vision

摄影机

Camera

运动监测

Motion Monitoring

高速检测

High Speed detection

产品特性

Product Feature

高速图像处理

High-speed Image
Processing

动态检测

Dynamic Detection

高帧率

High Frame rate

低功耗

Low Power consumption



Chengdu Office (Product Center - Headquarters)

9-10F, Unit B6-2, AI International Hub, 171# Hele 2nd street, Hi-Tech District, Chengdu, P.R.China

TEL: 028-68669333 WEB: www.imgds.com

E-mail: imgds@imagedesign.com

Shanghai Office (R&D Center)

497 Gaosi Road, Zhagjiang High Tech Park, Pudong New Area, Shanghai

Shenzhen Office (Support Center)

3F, tower t2-a, Shenzhen Software Park, No. 22, gaoxinnan 7th Road, Nanshan District, Shenzhen